

CAIVAN



SUMMIT SERIES MAIN RESIDENCE / PLAN 1

These modern, main residences offer an abundance of living space on two carefully designed floors, with windows and porches at the front and back flooding the home with natural light. For added convenience, a laundry room is situated on the main bedroom floor.

INFO

Square Feet	902
Bedrooms	2
Bathrooms	1.5
Parking	1

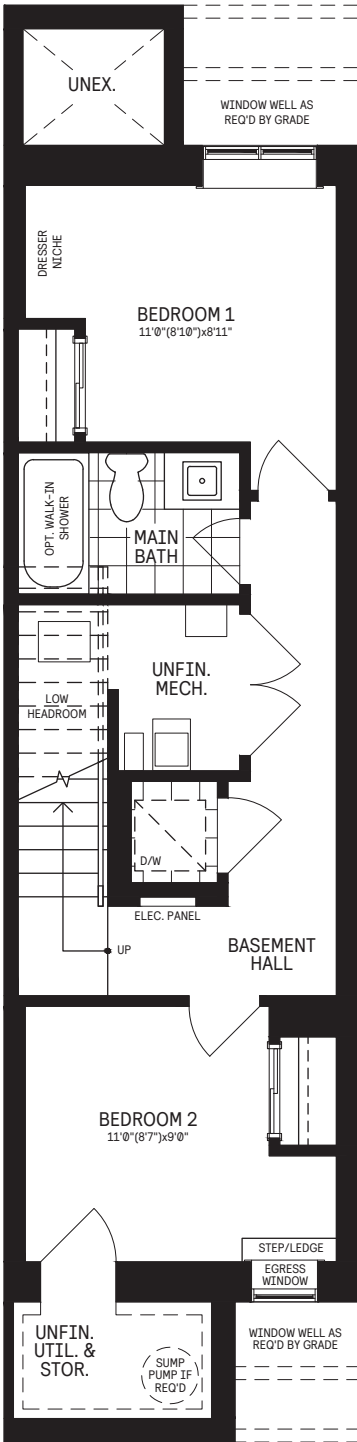


SUMMIT SERIES

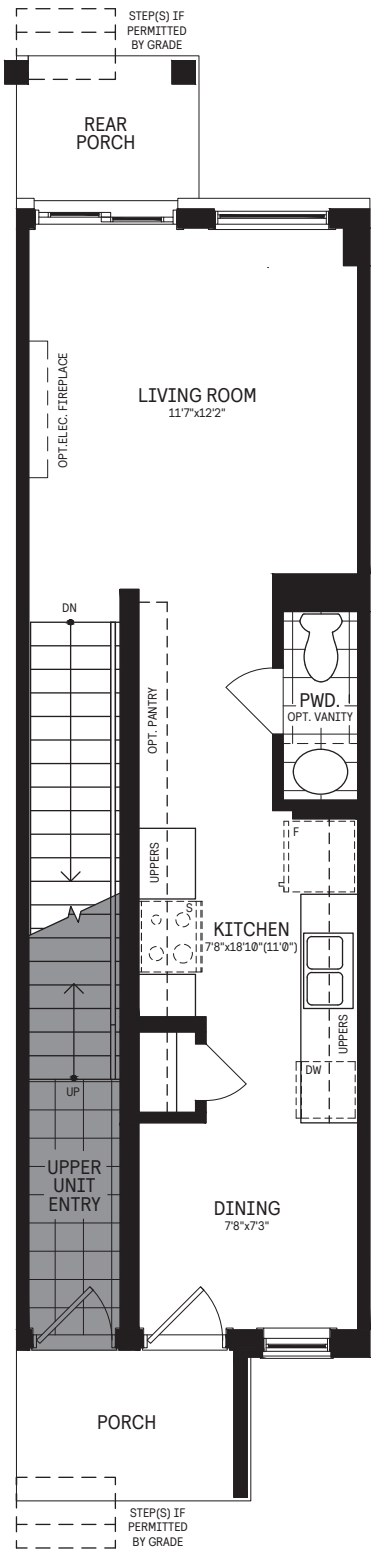
MAIN RESIDENCE /

PLAN 1

LOWER LEVEL



MAIN LEVEL



PLAN 1

Square Feet	902
Bedrooms	2
Bathrooms	1.5
Parking	1



CAIVAN

All Square Footages include Finished Basement area. Despite the best efforts of Caivan and its affiliates, officers, directors, employees or agents (collectively "we", "us" or "our" as circumstances warrant) to provide accurate information, including but not limited to prices and availability of homes or lots, it is regrettably not possible to ensure that all information contained in this display is correct. We do not warrant the accuracy and completeness of information, text, graphics or items contained in this display. All dimensions provided are approximate and sizes and specifications are subject to change without notice. Artist's concepts only. Actual usable floor space varies from indicated floor areas. Square footages include finished space in the basement. E & O. E. March 2025. THIS DISPLAY IS PROVIDED AS IS WITHOUT WARRANTY OF ANY KIND, EITHER EXPRESS OR IMPLIED, WARRANTIES OF MERCHANTABILITY, FITNESS FOR A PARTICULAR PURPOSE, OR NON-INFRINGEMENT. The information and specifications contained in this brochure are subject to change without notice and represent no commitment on our part in the future. All products and services are provided subject to applicable taxes and accompanying terms and conditions.