

CAIVAN



405 EPOCH STREET

25' COLLECTION PLAN 2

ELEVATION B

THE RIDGE

\$644,990

Backing onto Park, includes over \$40,000 in upgrades.

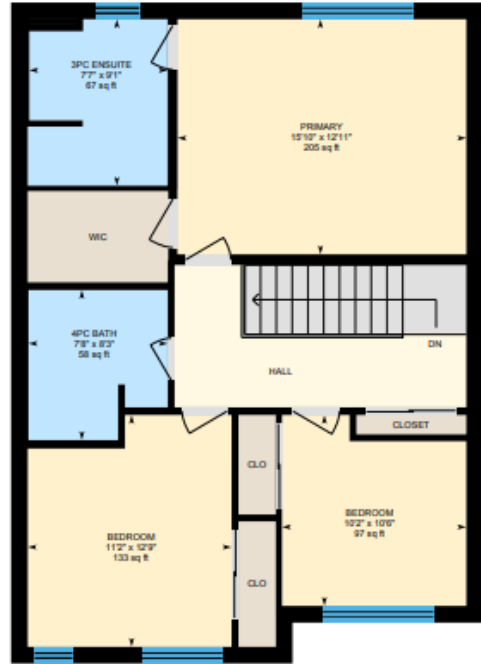


FLOORPLANS

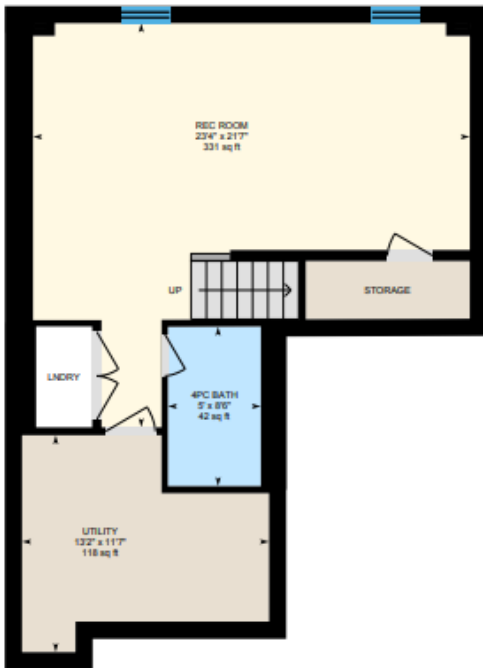
MAIN FLOOR



2ND FLOOR



BASEMENT





405 EPOCH STREET
OTTAWA, ON K2J 6X5



\$644,990

3 Beds – 3.5 Baths – 2 Car Parking – 2,125 SQ. FT.

- Kitchen Backsplash
- Hardwood on Main Floor
- Quartz Kitchen Countertop
- Finished Basement Bathroom

[VIRTUAL TOUR](#)



Simon Silverstone

Lead Sales Consultant

Simon.silverstone@caivan.com

613-617-9278

CAIVAN